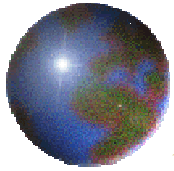


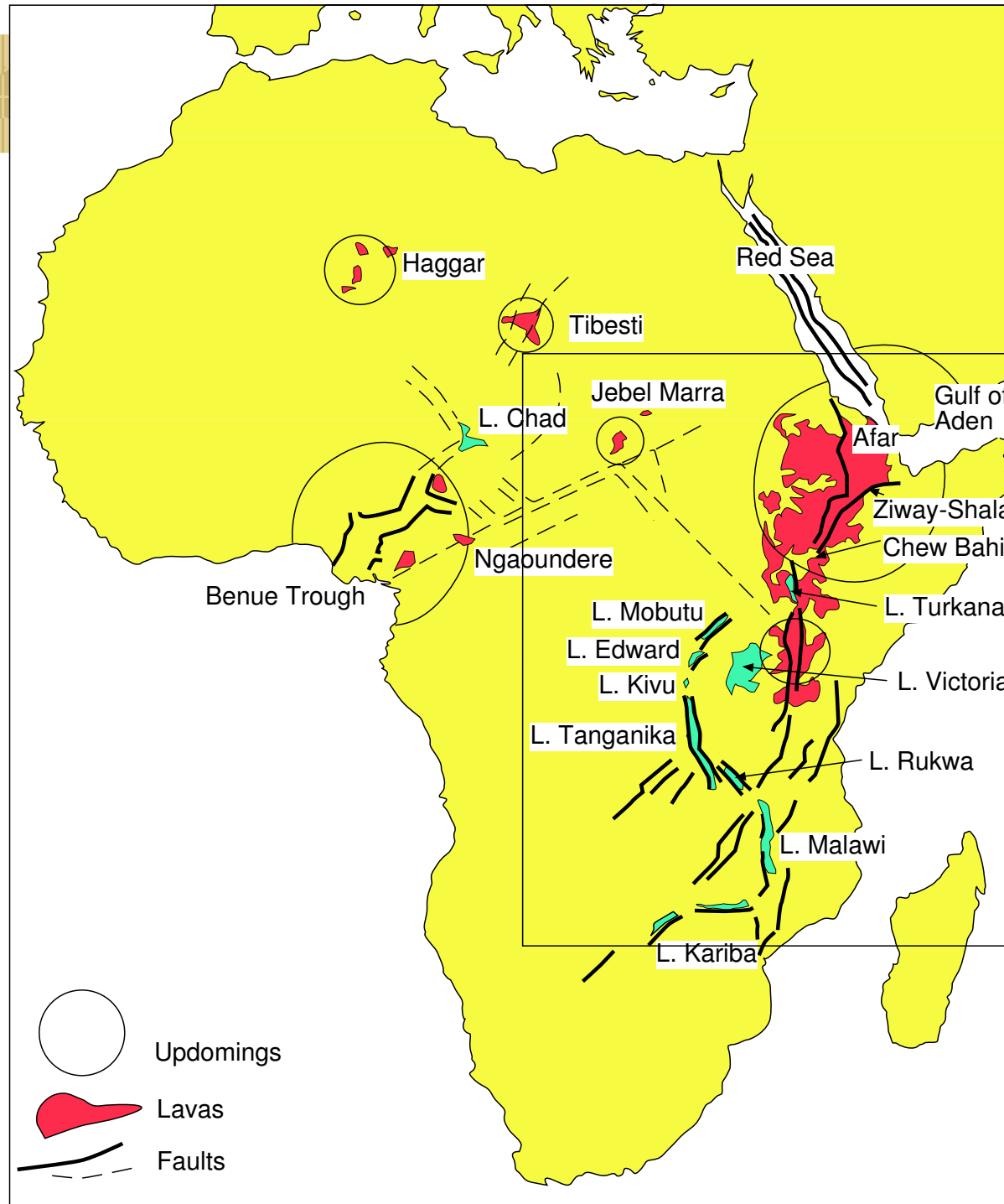
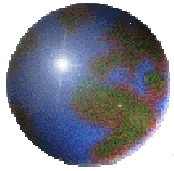
*Remote sensing data  
interpretation in geology*

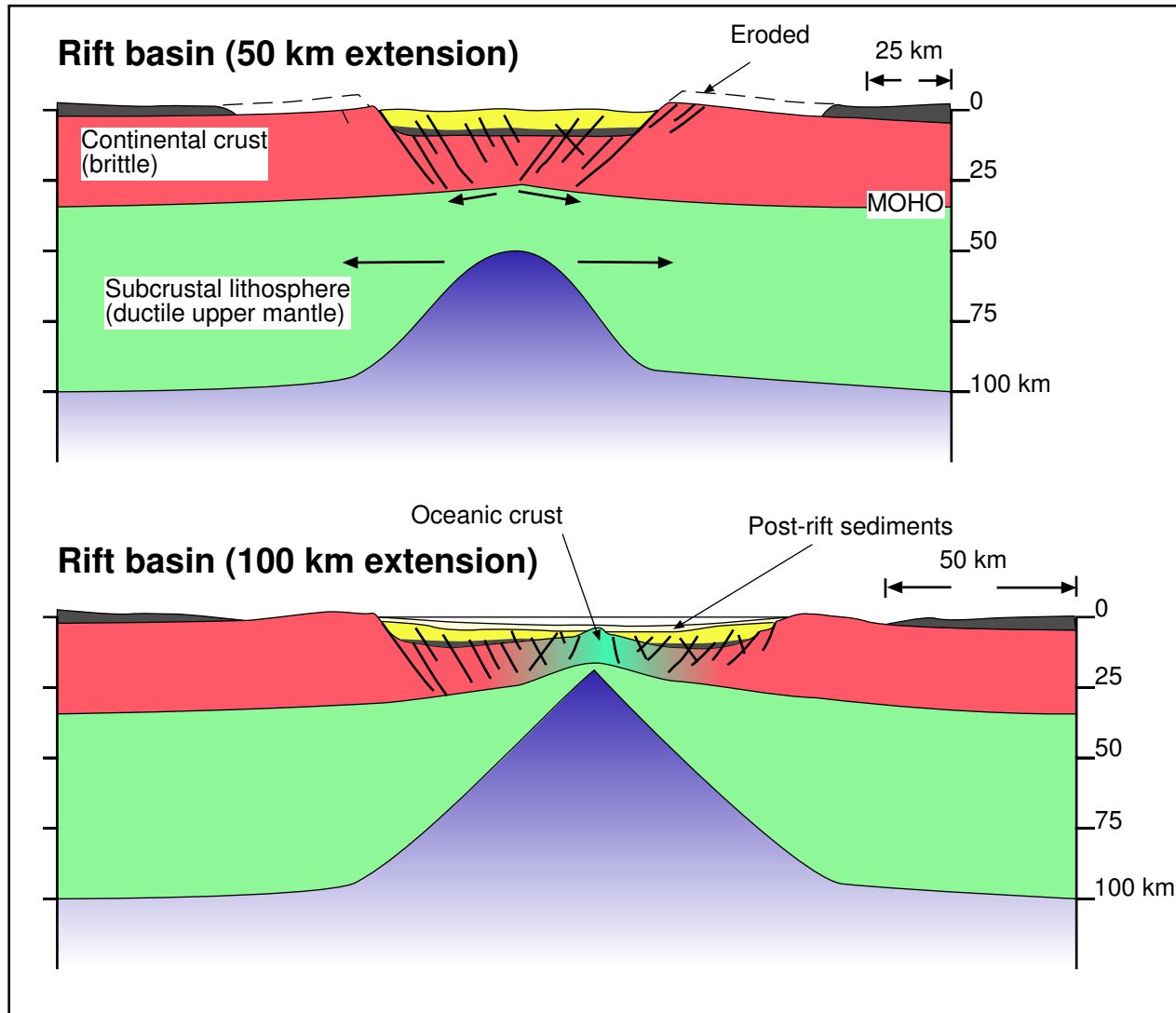
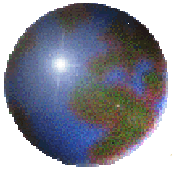
Karel Martínek



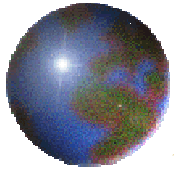
# *Image interpretation*

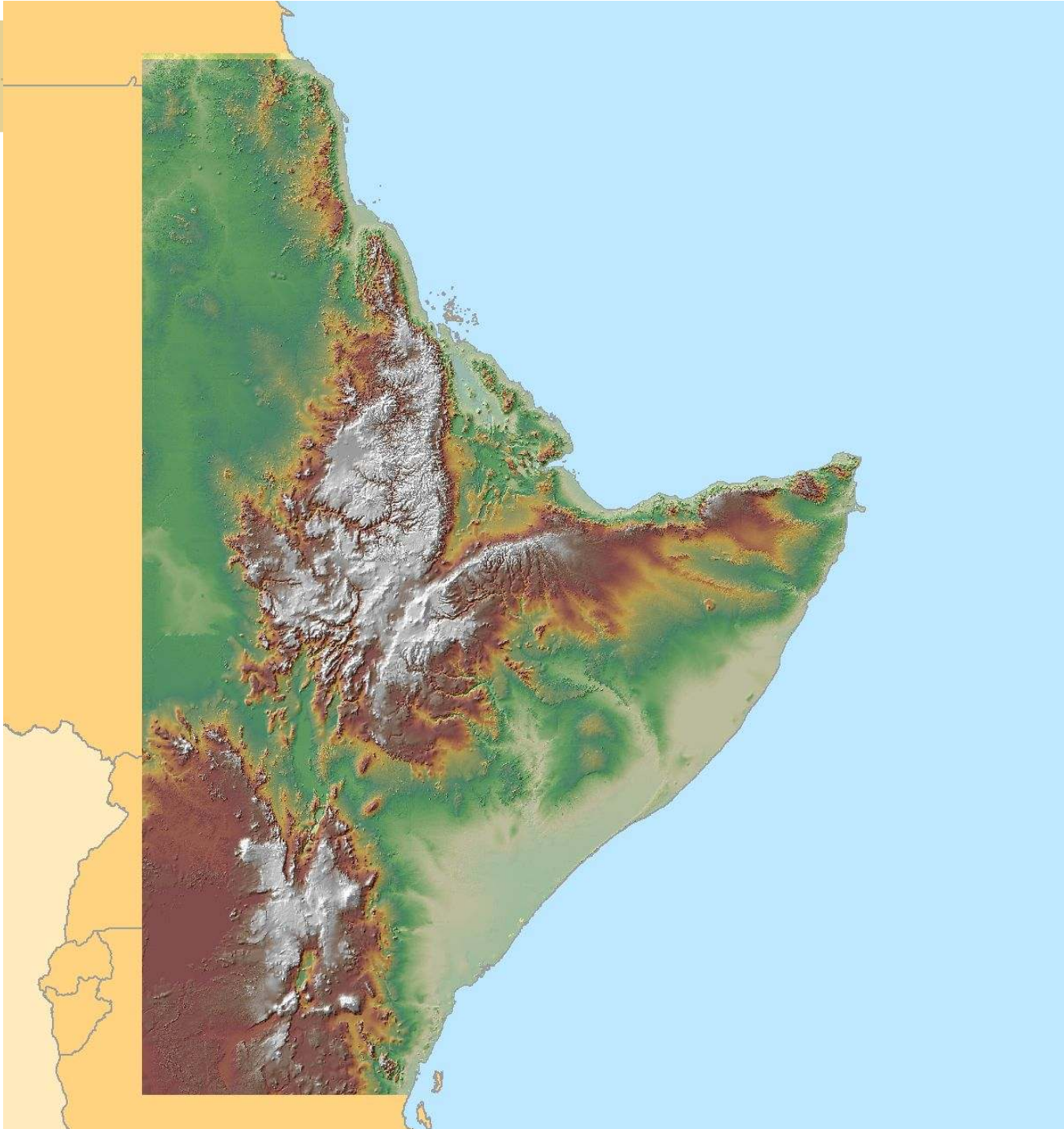
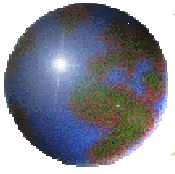
- ❁ tectonics – morphotectonic analysis
  - ❁ analysis of brittle deformation based on geomorphology
  - ❁ data needed: digital elevation model (DEM), panchromatic images, Landsat TM5, radar images
- ❁ lithology – spectral analysis
  - ❁ identification of lithological boundaries based on spectral significance of rocks and minerals
  - ❁ data needed: multispectral or hyperspectral images



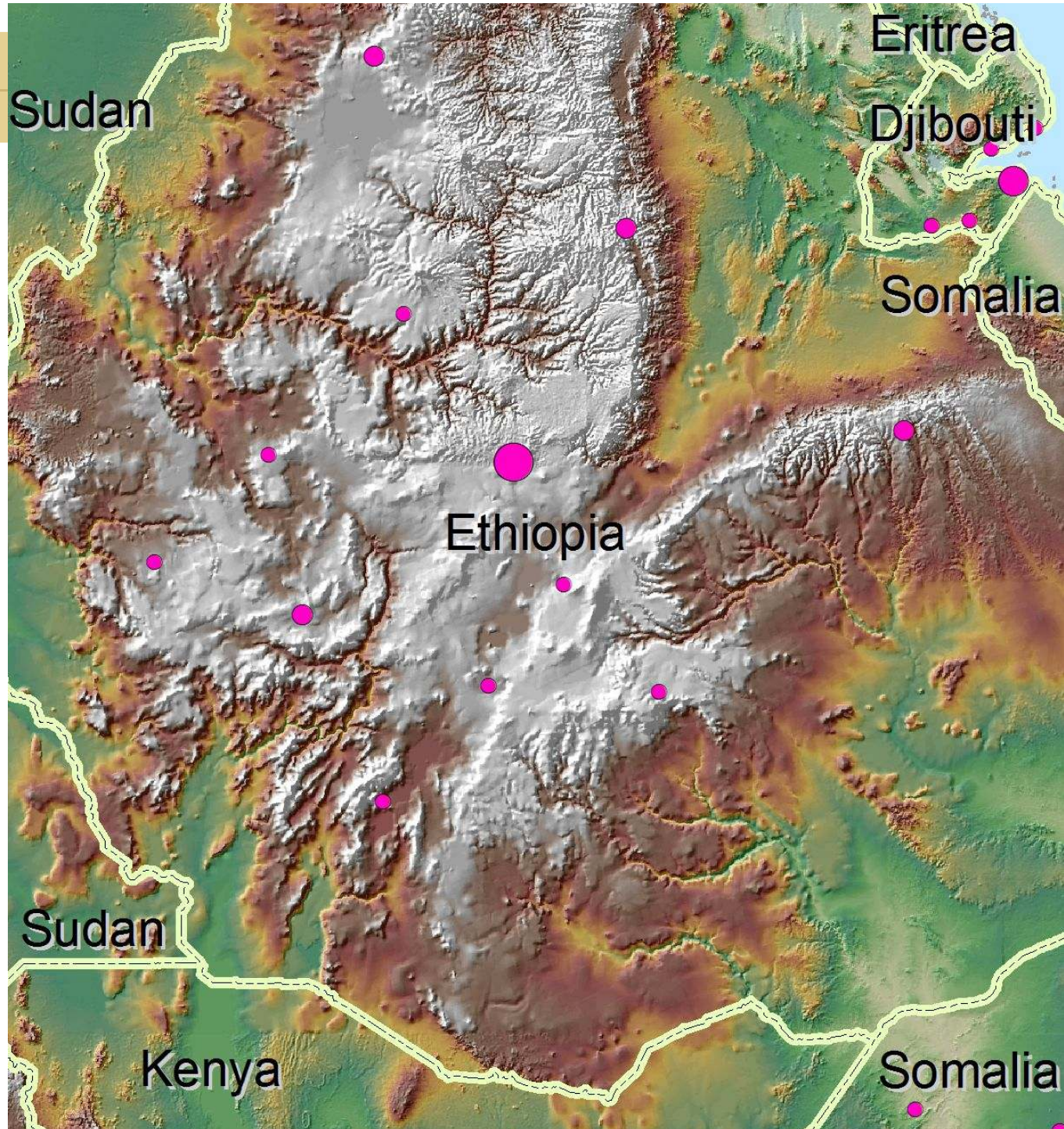
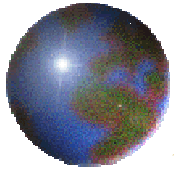




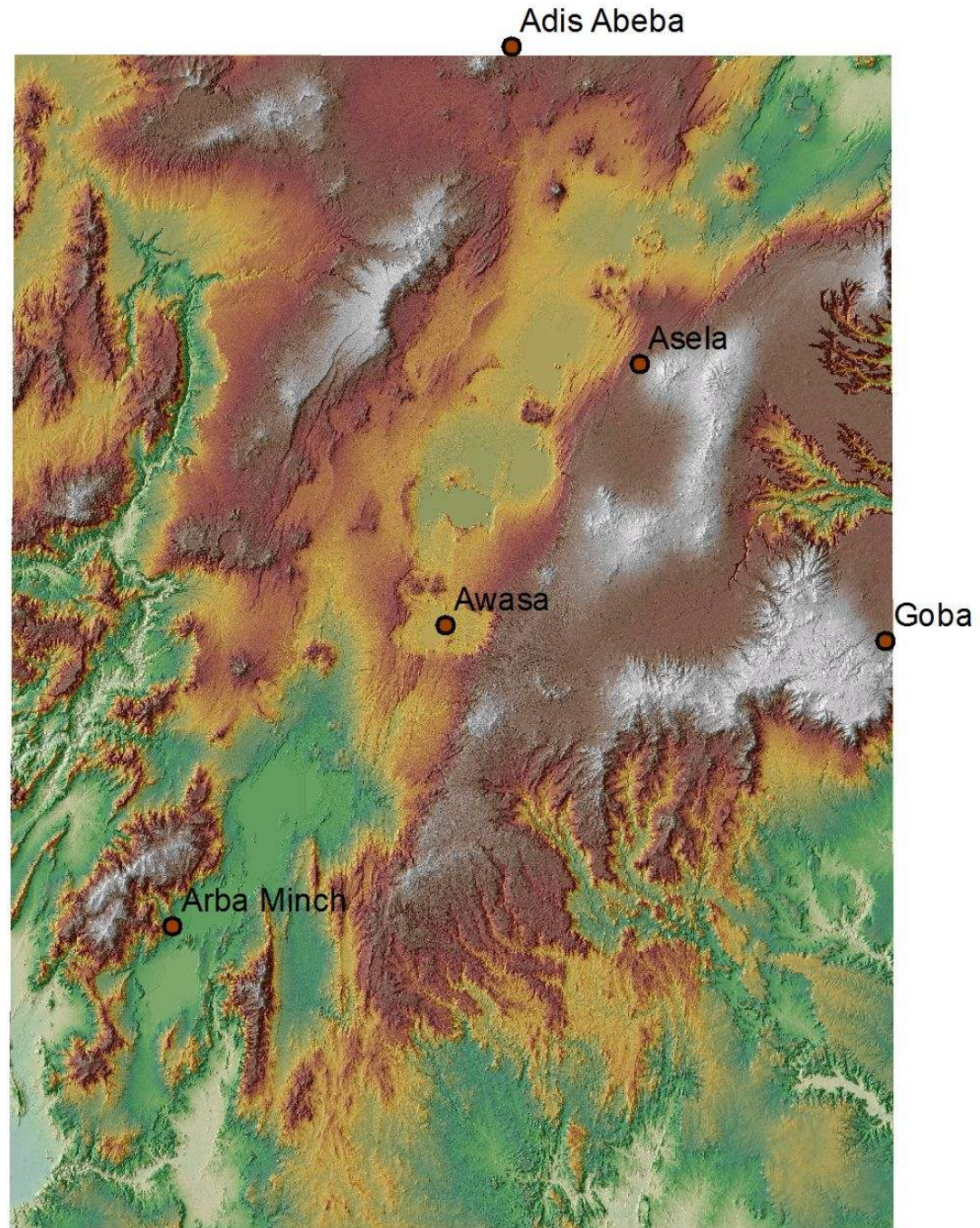
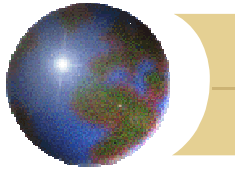




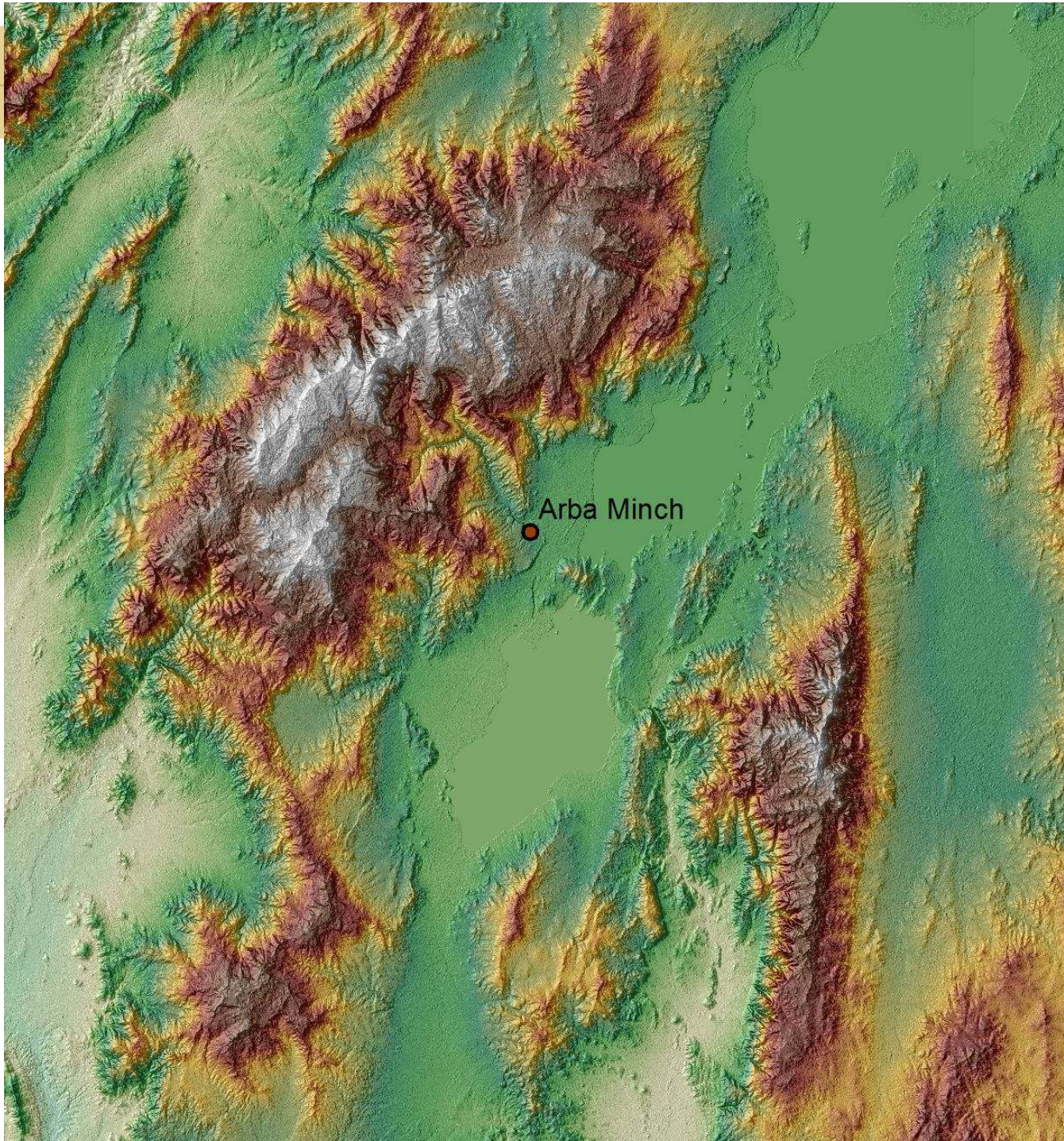
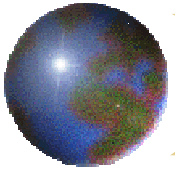




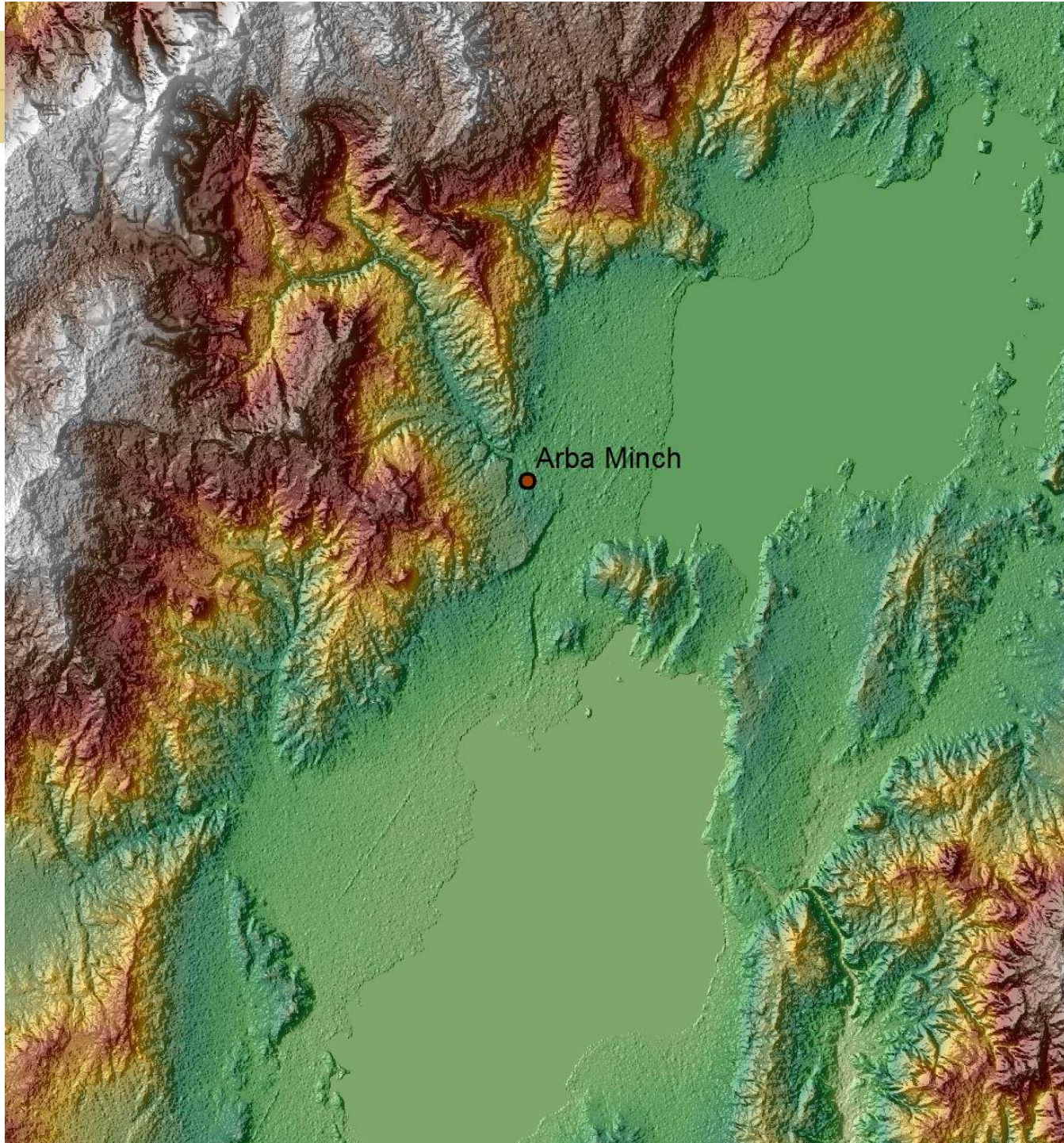
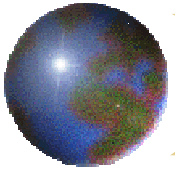




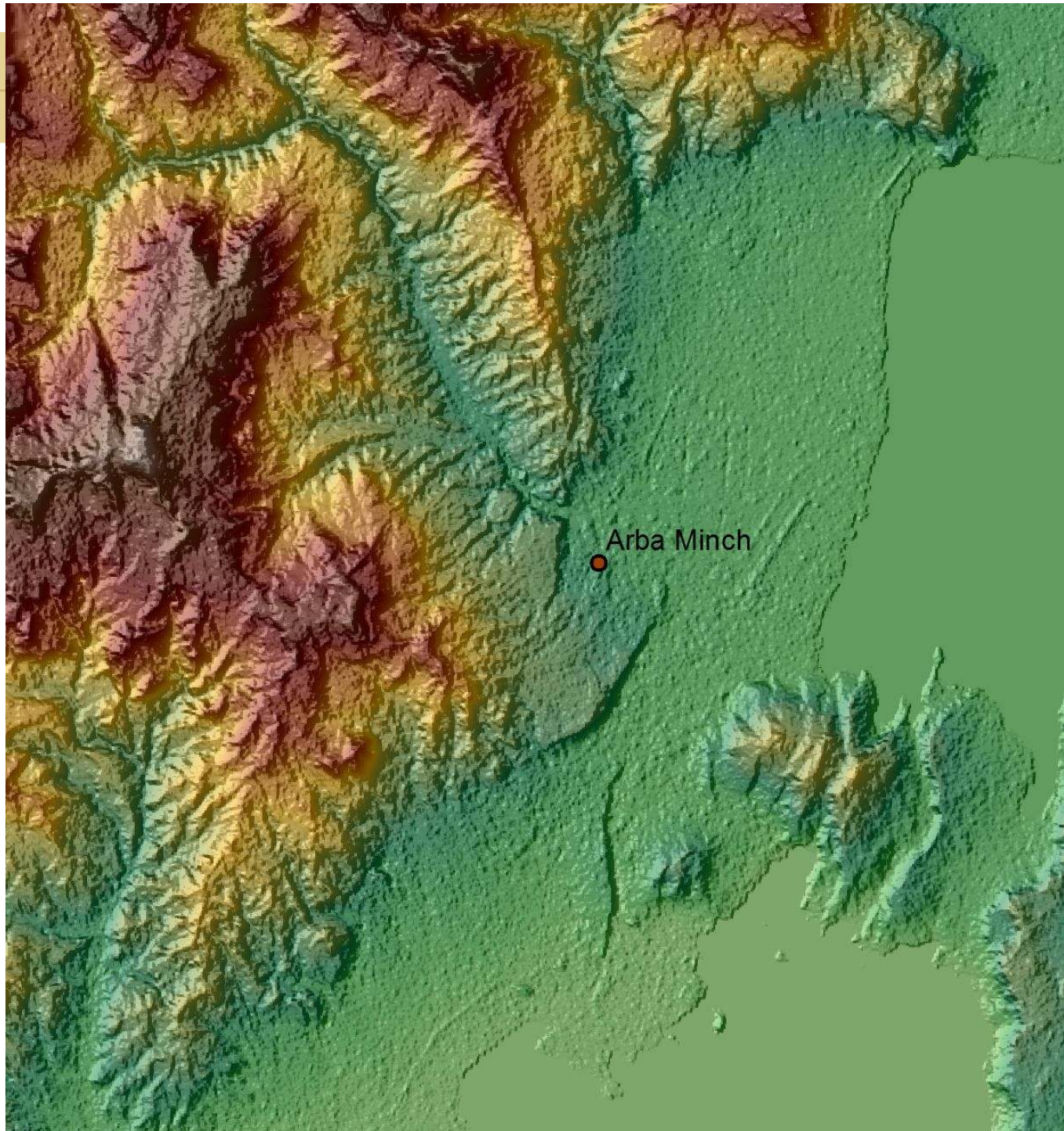
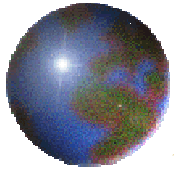




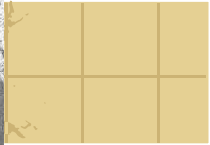
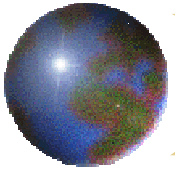






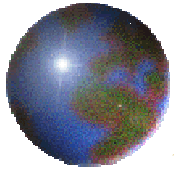






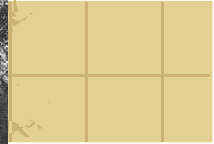
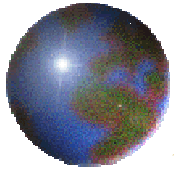
PAN





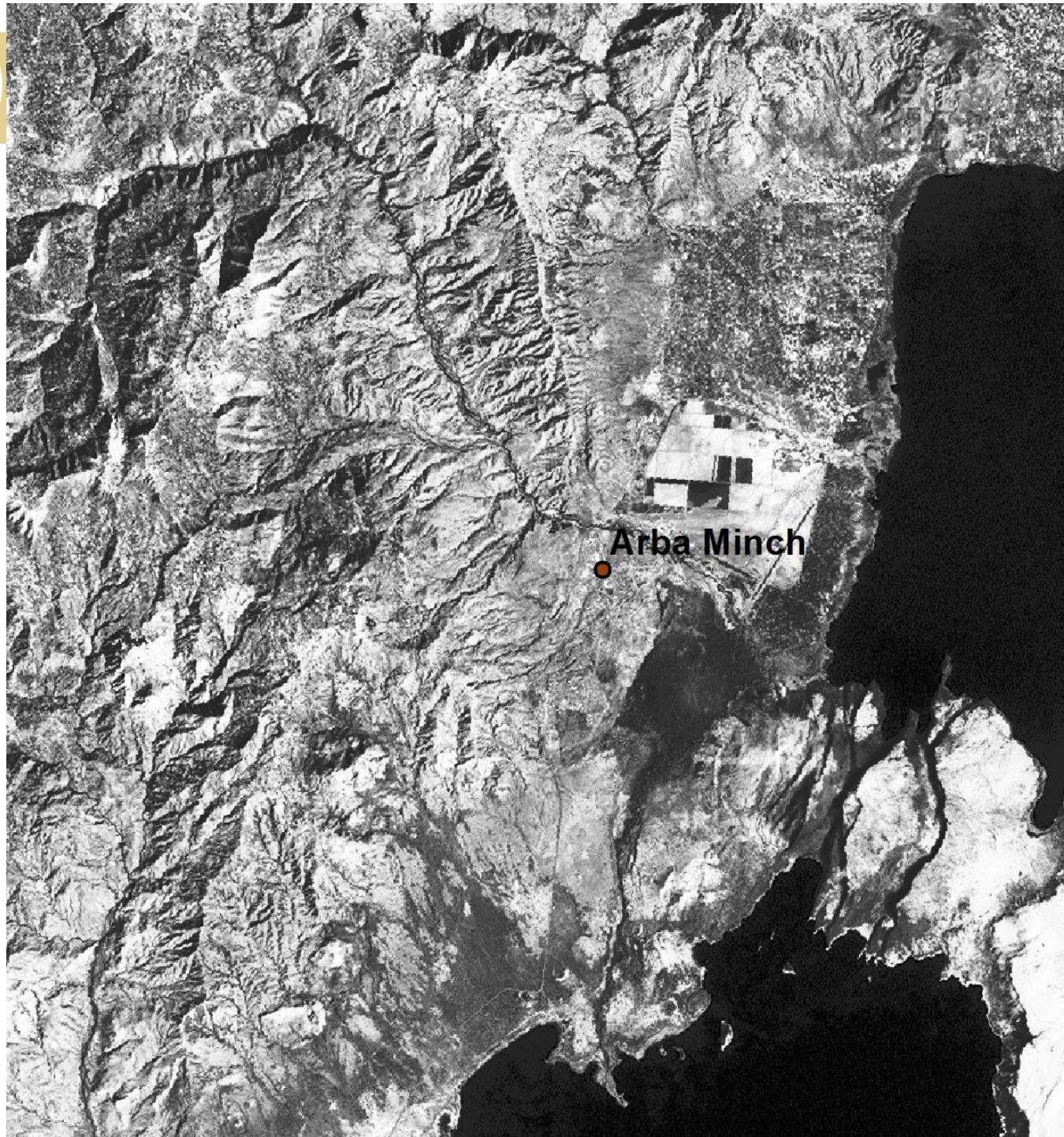
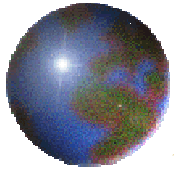
PAN





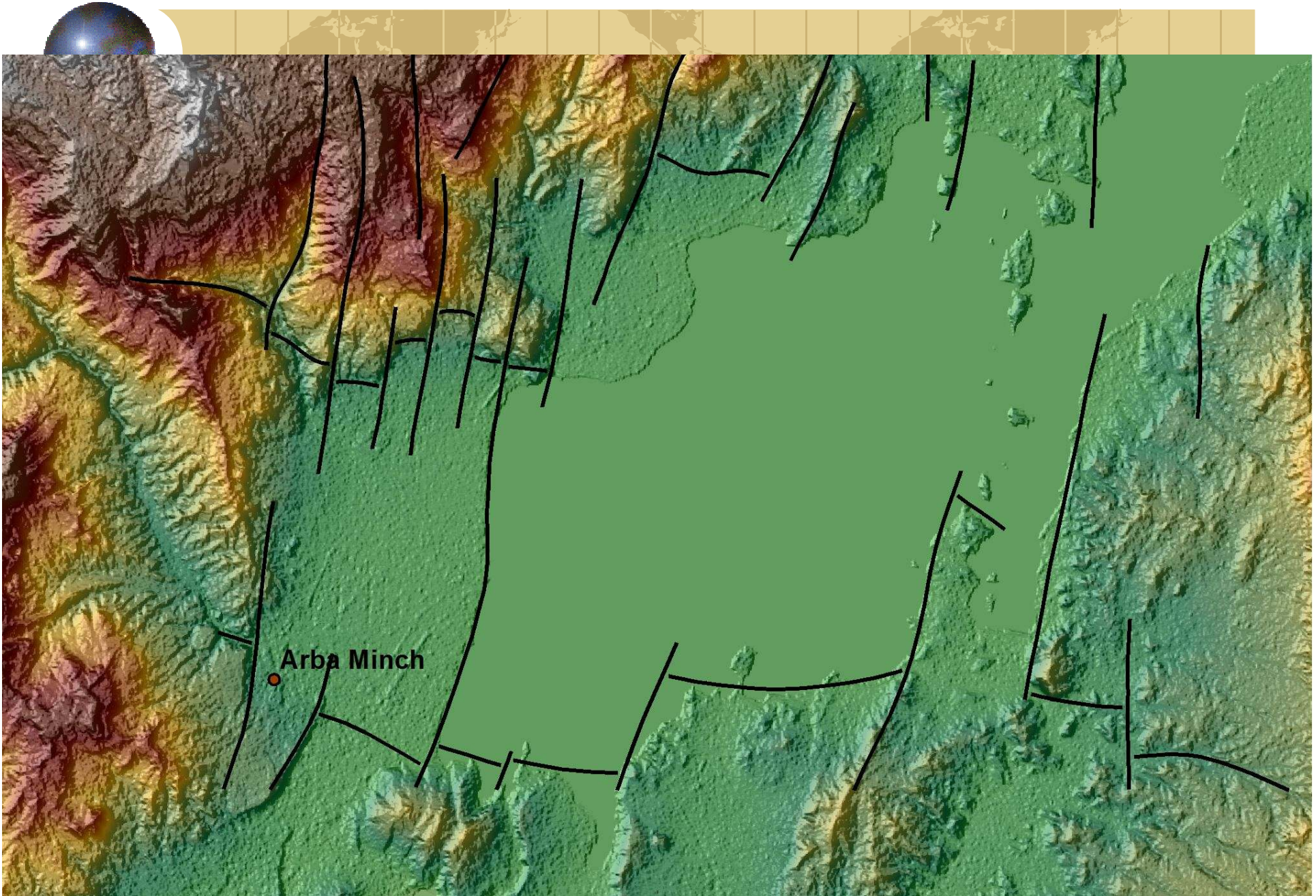
TM5



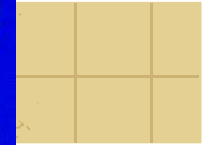
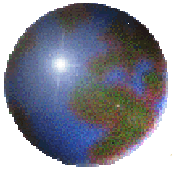


TM5



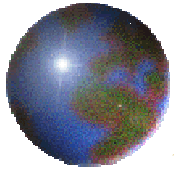






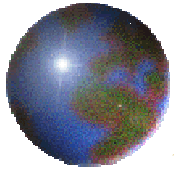
321  
as  
RGB





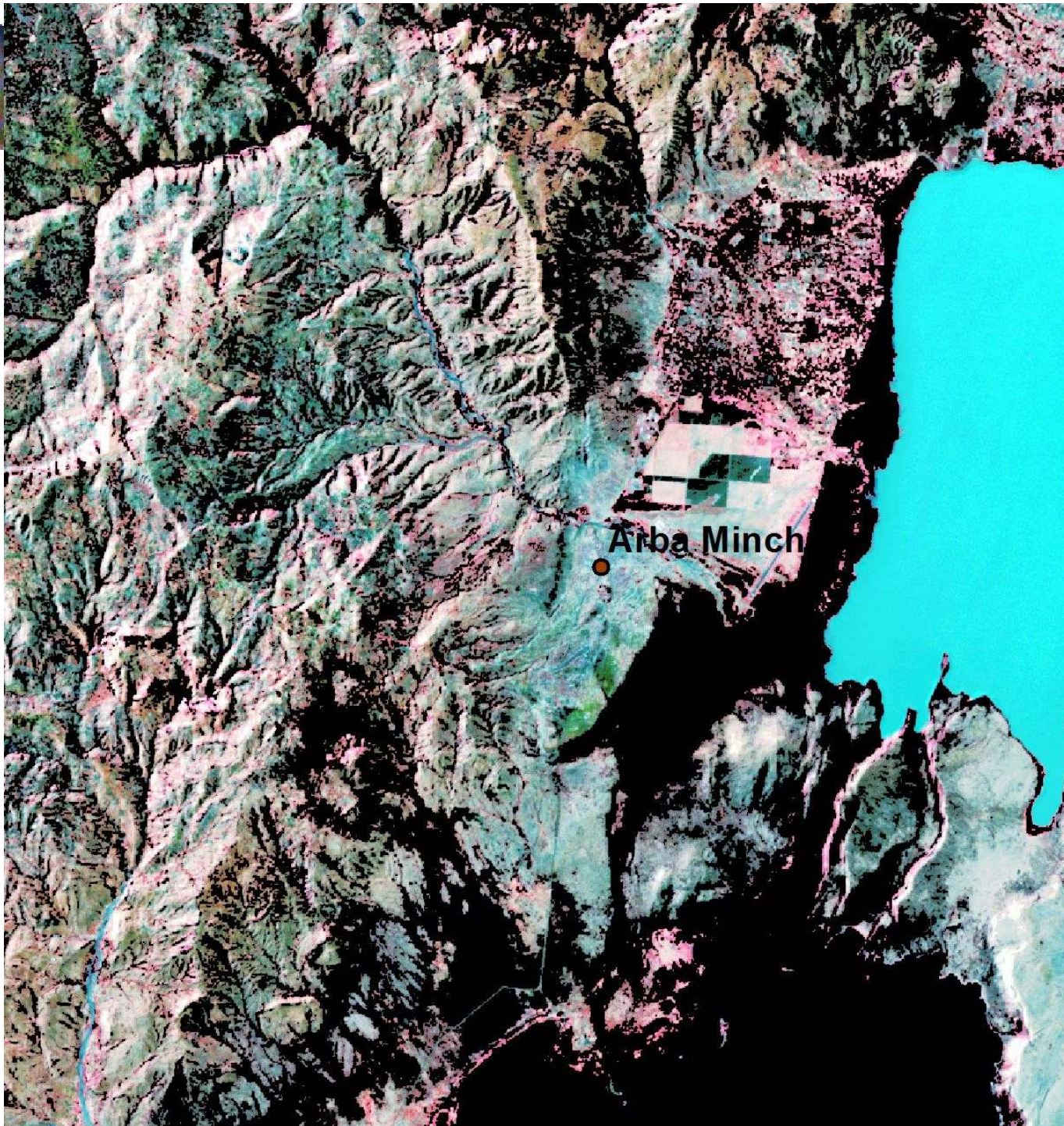
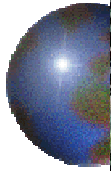
321  
as  
RGB





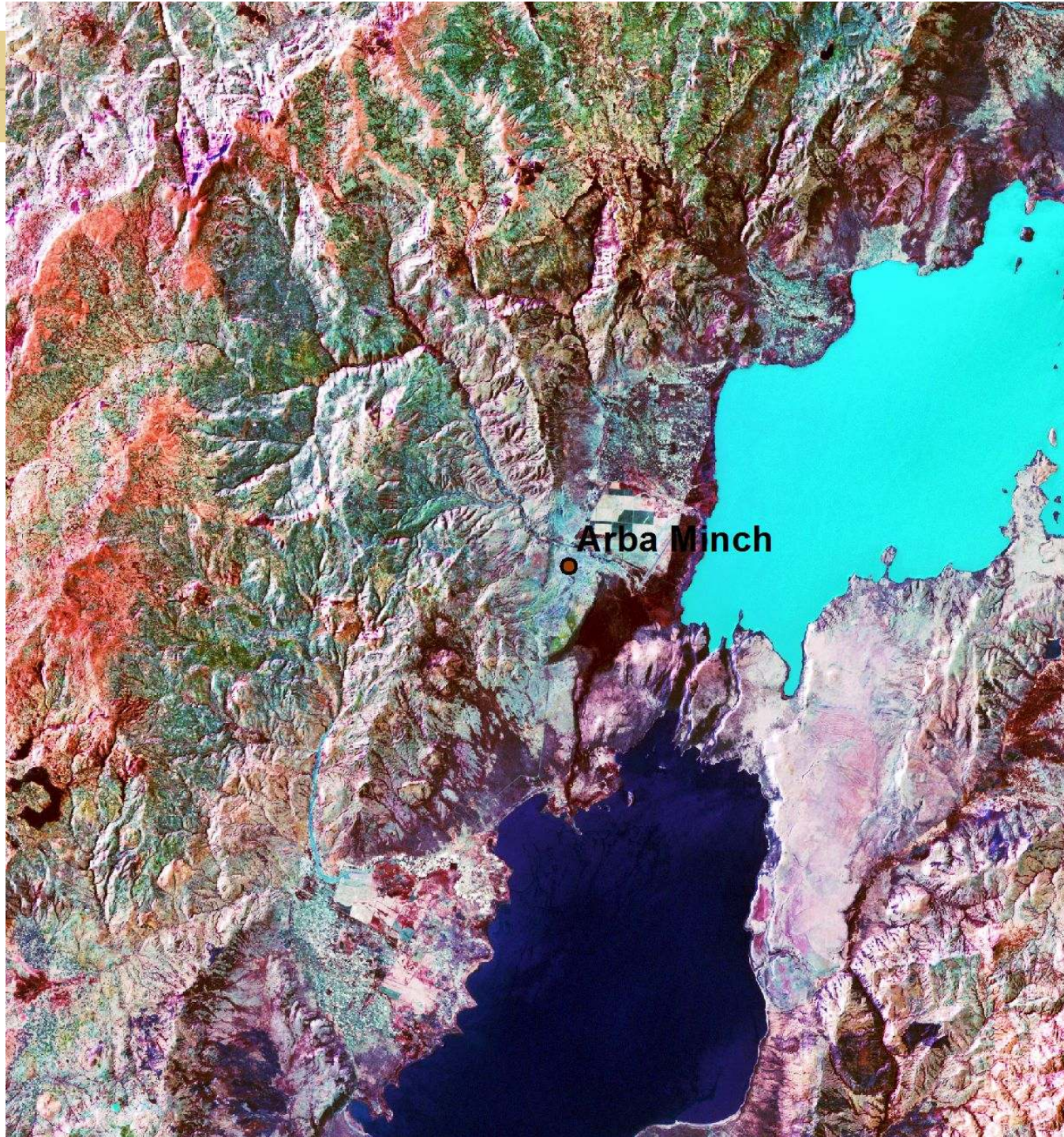
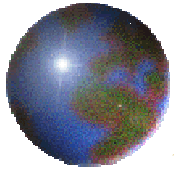
432  
as  
RGB





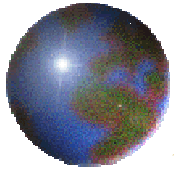
432  
as  
RGB  
vegetation  
masked  
out





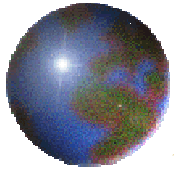
531  
as  
RGB





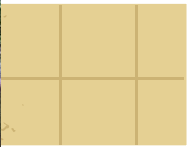
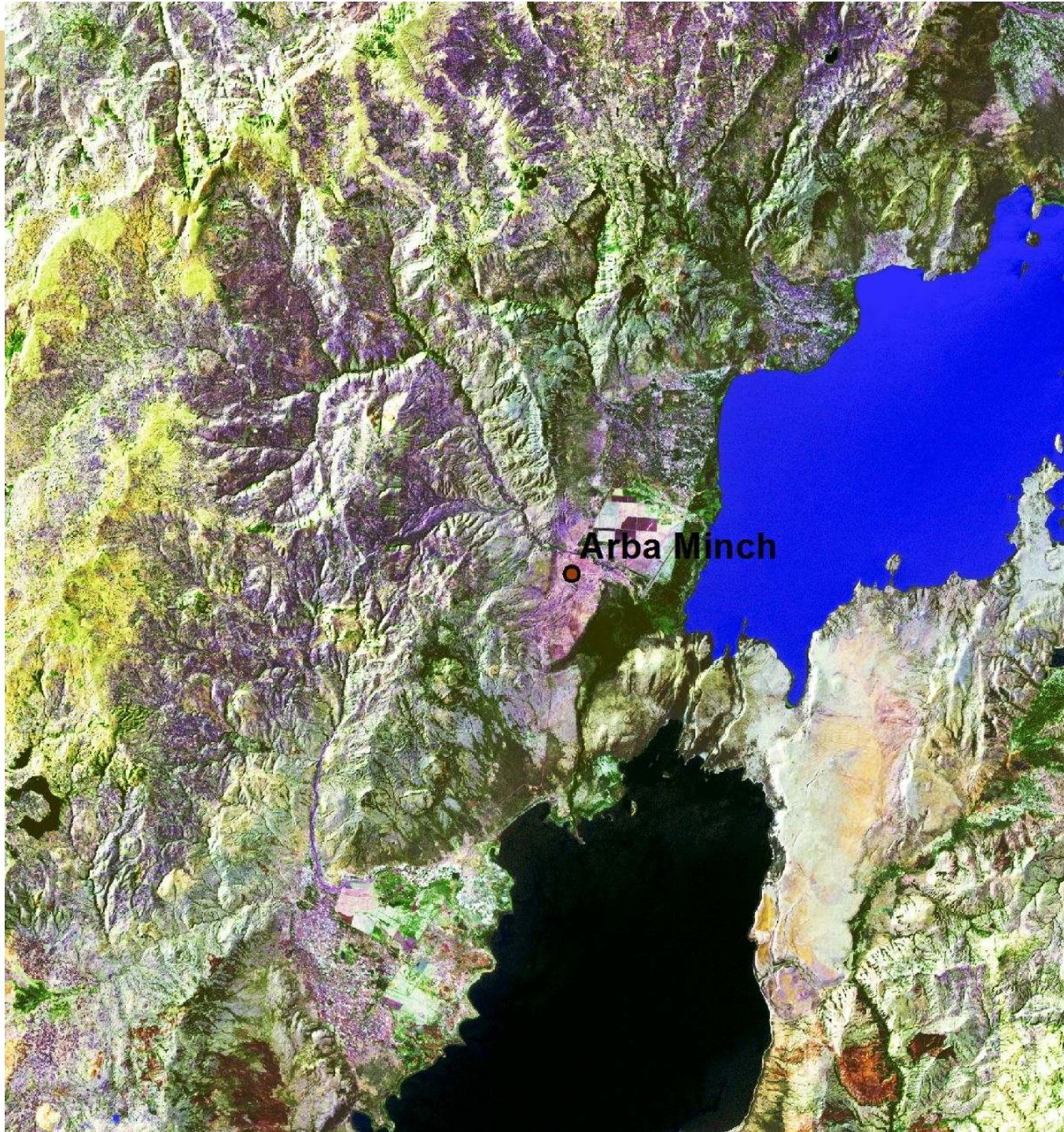
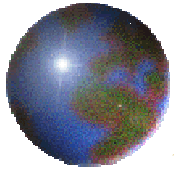
531  
as  
RGB





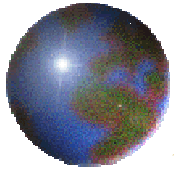
531  
as  
RGB  
vegetation  
masked  
out





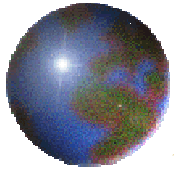
753  
as  
RGB





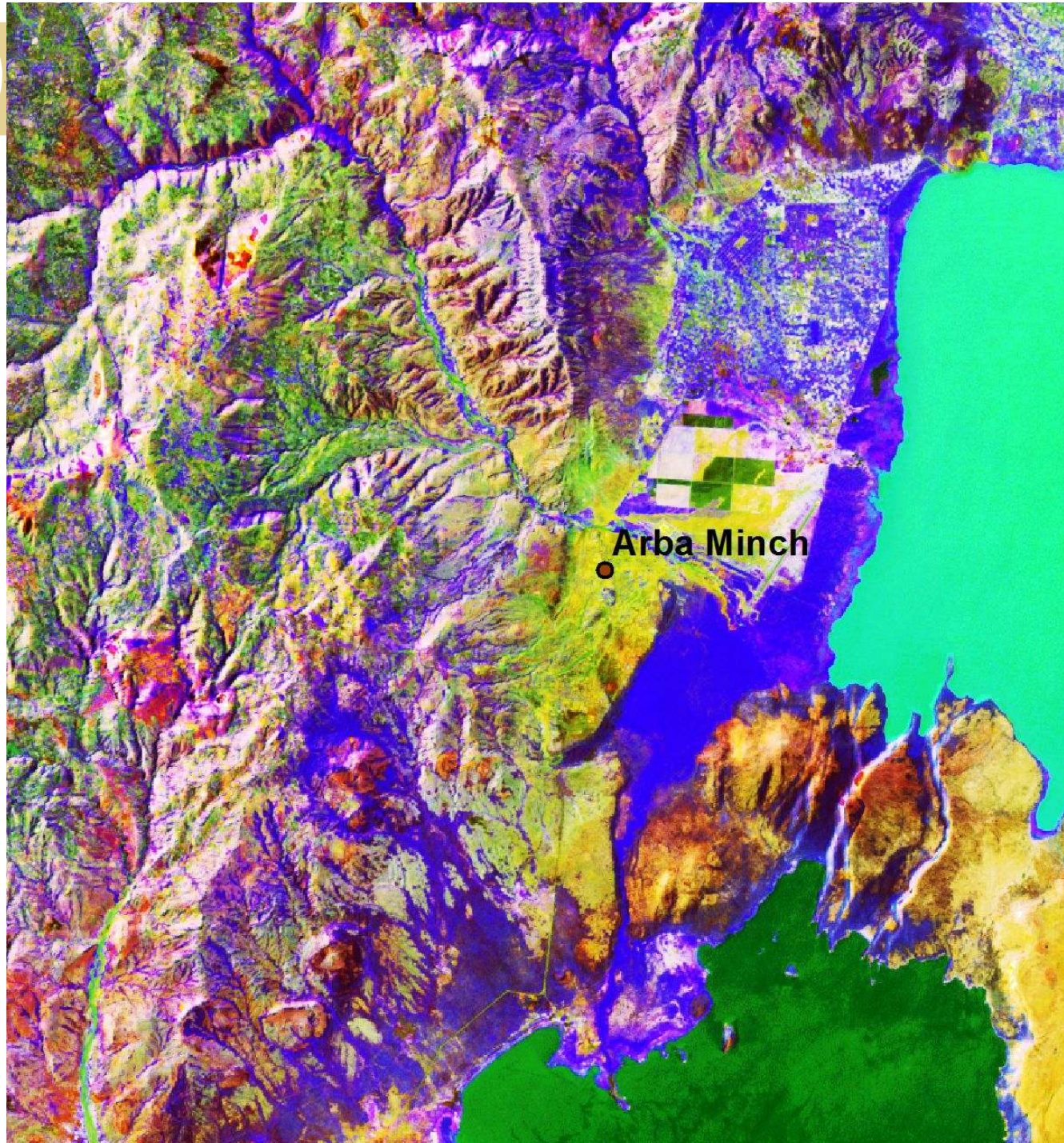
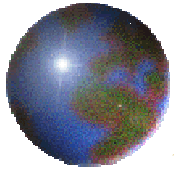
753  
as  
RGB





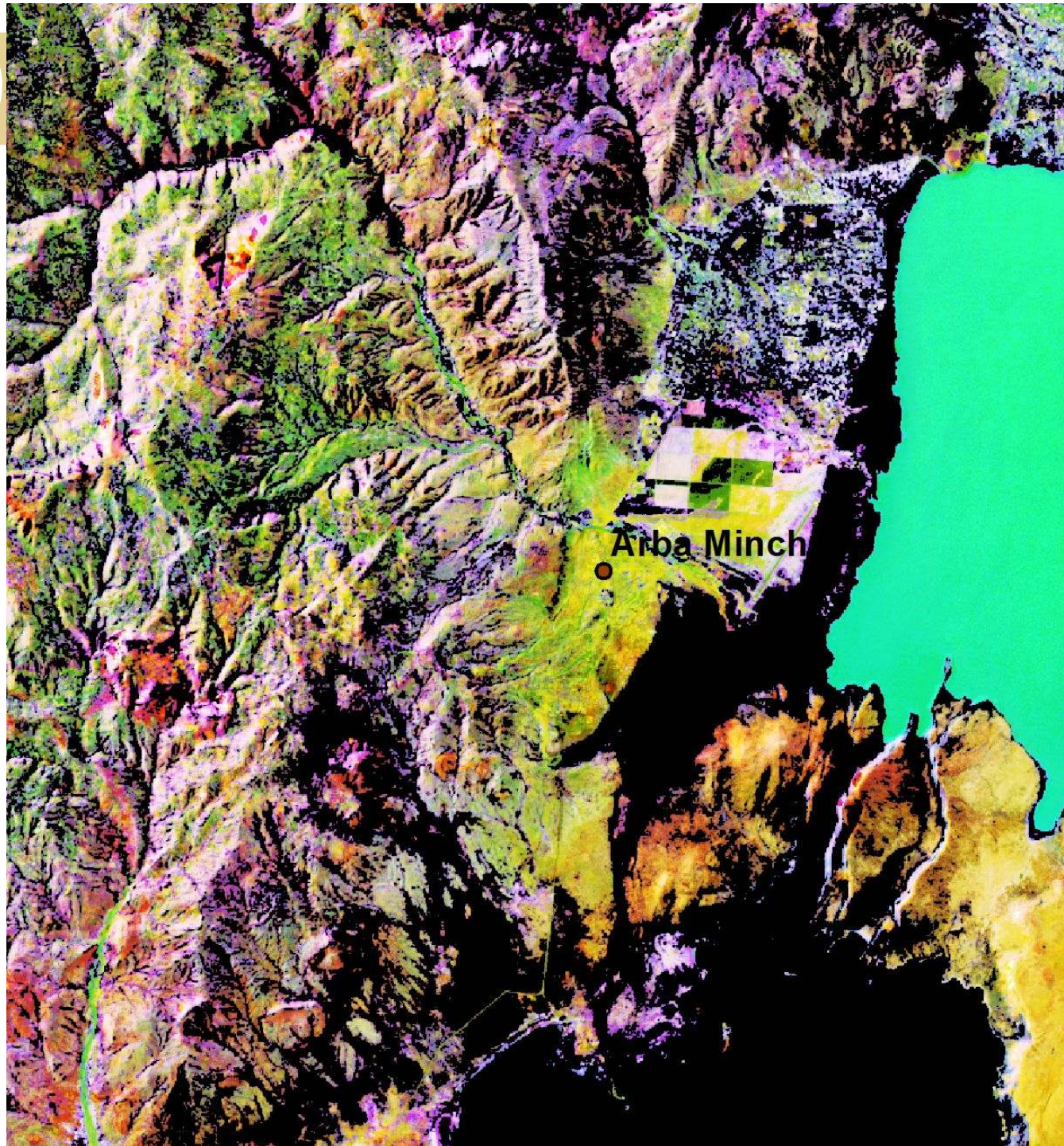
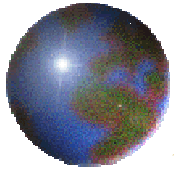
753  
as  
RGB  
vegetation  
masked  
out





PCA 123  
as  
RGB





PCA 123  
as  
RGB  
vegetation  
masked  
out